

Plate 1

TOTAL-DISSOLVED-SOLIDS CONCENTRATION MAP FOR THE VALLEY-FILL AQUIFER MORGAN VALLEY, MORGAN COUNTY, UTAH

By Janae Wallace, Mike Lowe, and Neil Burk

Digital Compilation by Justin Johnson,
Matt Butler and Scott Horn

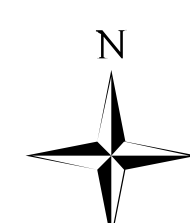
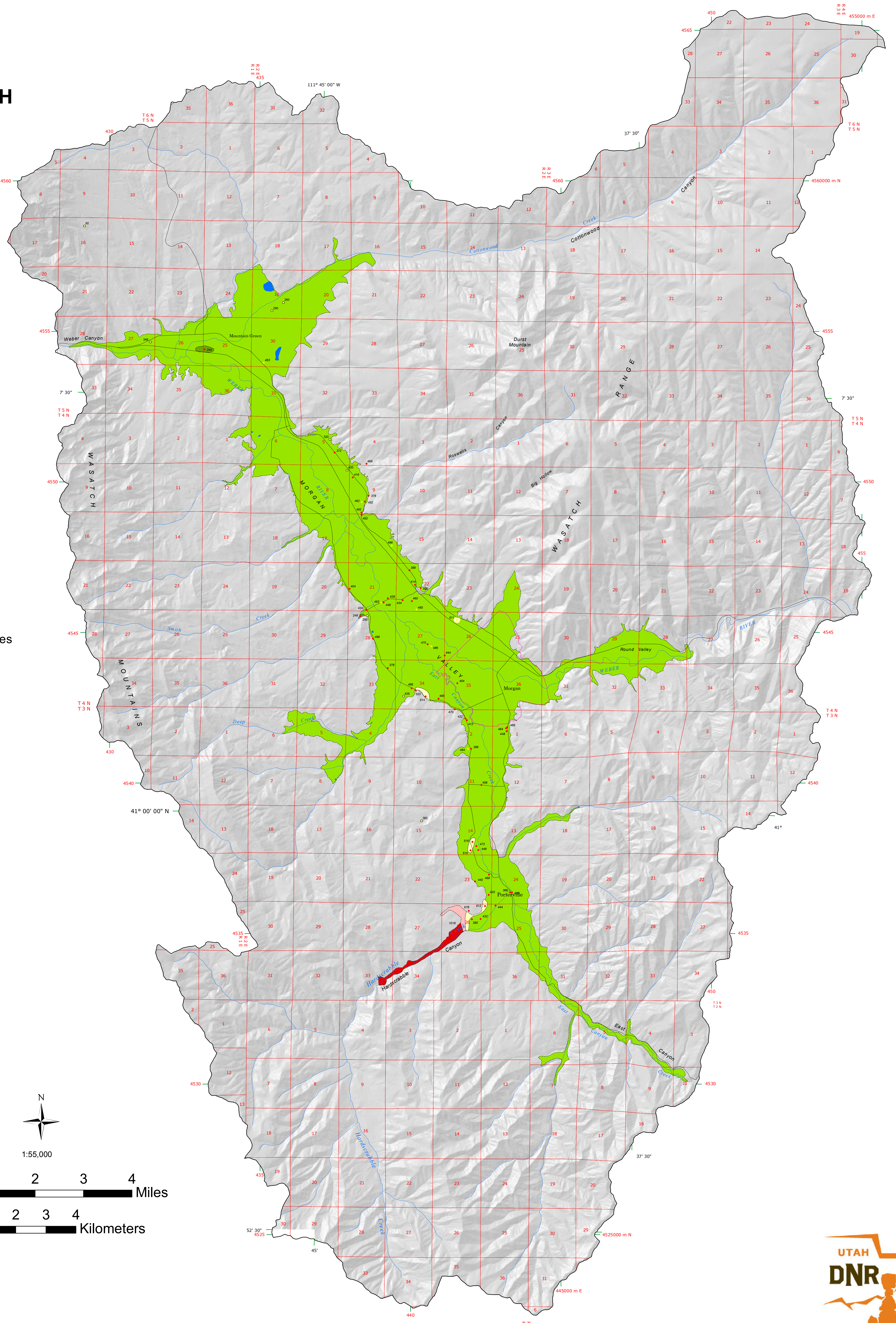
Explanation

Total-Dissolved-Solids Concentration

- 0 - 250 mg/L
- 251 - 500 mg/L
- 501 - 750 mg/L
- 751 - 1000 mg/L
- 1001 - 2000 mg/L

- Ground Water Well (Sampled for TDS and nitrate)
- Ground Water Well (Sampled for nitrate and having TDS values derived from specific conductance calculations)
- Public supply well or spring (sampled for TDS and nitrate)
- Labels indicate TDS concentration at well location

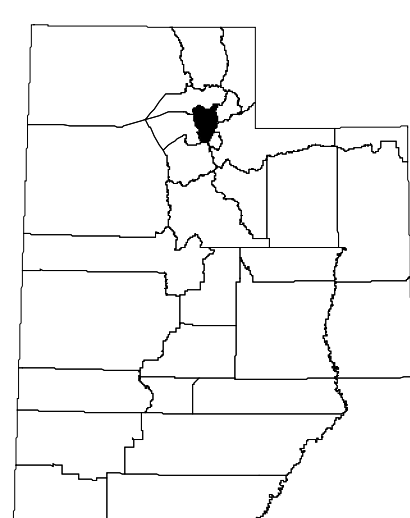
- Line of equal concentration of dissolved solids
- Municipal boundary
- Road
- Water course
- Valley-fill deposits boundary
- Study-area boundary
- Water body
- Bedrock (not analyzed)



1:55,000

0 0.5 1 2 3 4 Miles

0 0.5 1 2 3 4 Kilometers



UTAH

